

C E S A R

TANGRAM

Design by García Cumini

Thinking outside of the box and sparking curiosity are the concepts which guided García Cumini and Cesar in the creation of Tangram. Inspired by the ancient Chinese game of geometric shapes that can be combined with on another to create endless figures, Cesar's product echoes modular logic while avoiding linearity. The Tangram project exalts the curve and its infinite possible combinations.



cesar.it

©Cesar Arredamenti Spa

C E S A R

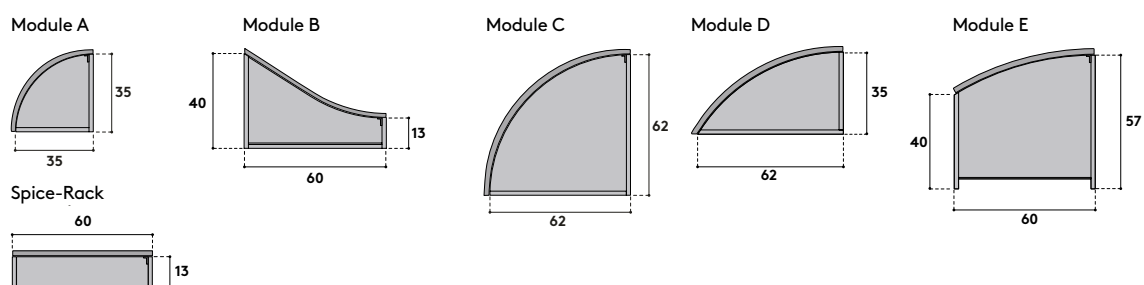
TANGRAM

Design by García Cumini

THE PROTAGONISTS OF THE TANGRAM PROJECT

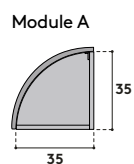
Tangram is made up of five curved elements that can be added to Cesar's modules at will to build kitchen islands with unusual shapes, compositions set against the wall, or even solutions that wrap around corners. These eccentric shapes aren't made up of simple semicircles or portions of circles, but rather follow a fixed radius that is different for every module, introducing a new concept of sinuosity in kitchen design and adapting to various needs.

TANGRAM MODULES



TANGRAM SIDEBOARD H138 CM

Tangram sideboard modules are only available H138 cm high paired with a H6 cm high plinth.



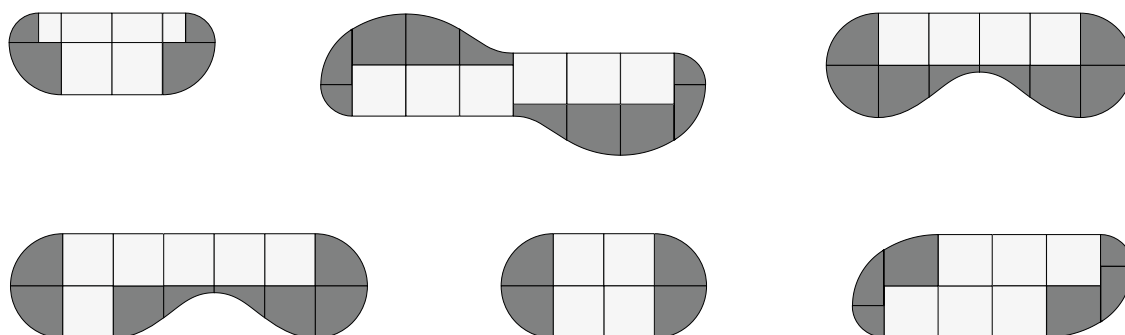
C E S A R

TANGRAM

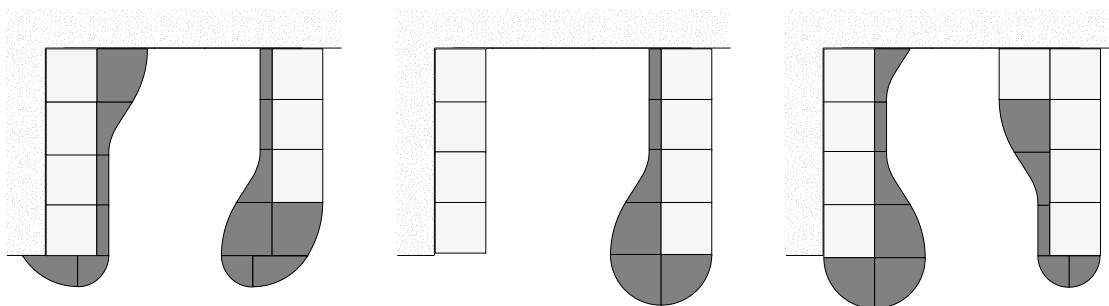
Design by García Cumini

PUT TOGETHER YOUR TANGRAM

Island



Peninsula

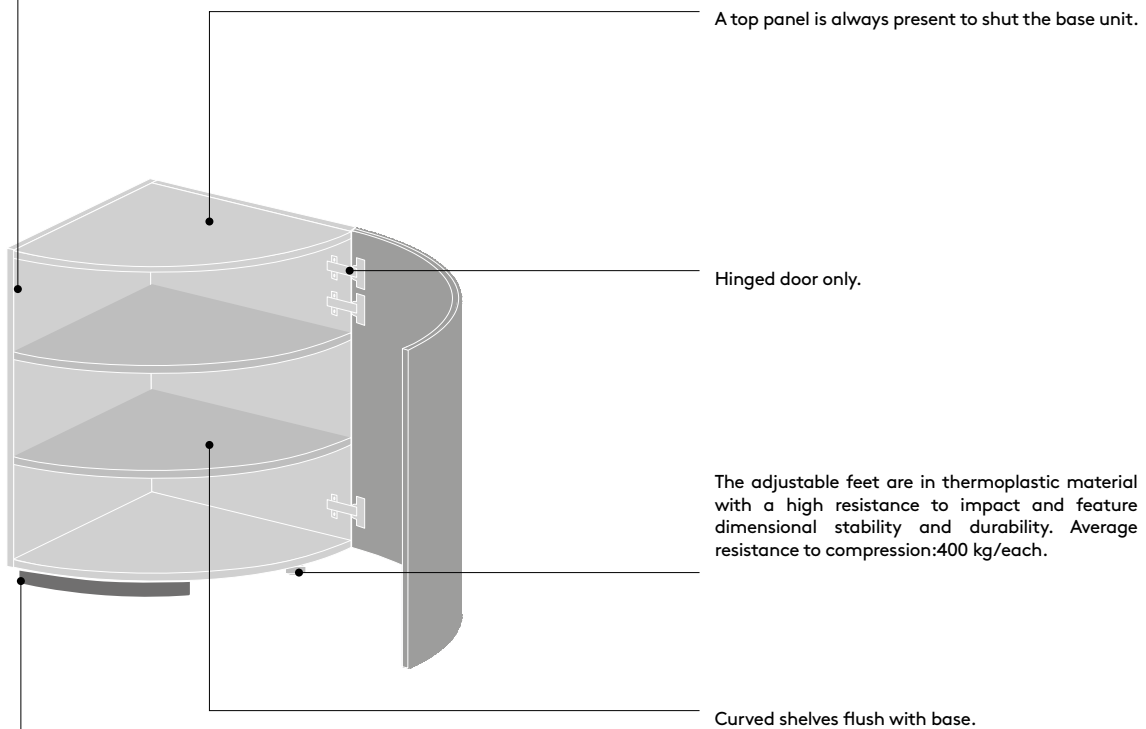


TANGRAM

Design by García Cumini

GENERAL FEATURES TANGRAM CURVE CARCASS

Carcasses: The materials used are FSC/Carb Phase II /TSCA Title VI compliant/F**** and V100 certified and ensure very low formaldehyde emissions and maximum resistance to humidity. They are 18 mm thick to ensure the perfect stability and durability of the hardware used.

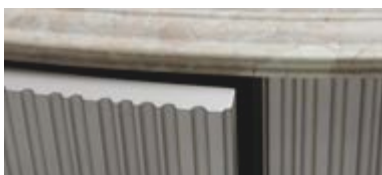


Plinths H6 cm are in aluminium for maximum durability over time and minimum maintenance. They are supplied with a magnetic fastener.

TANGRAM

Design by García Cumini

INFORMAZIONI GENERALI ANTE TANGRAM



WITH GROOVE DOOR

The Groove door, with a thickness of 2.2, is made up of a sequence of vertical grooves which create an irregular three-dimensional pattern, designed to hide the joint between the modules and ensure a unitary perception of the entire arrangement.

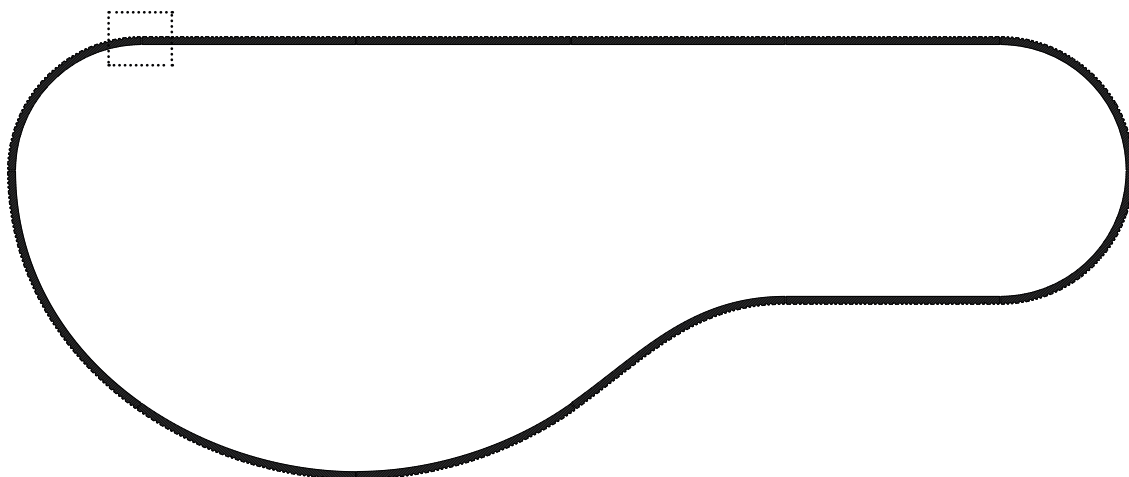
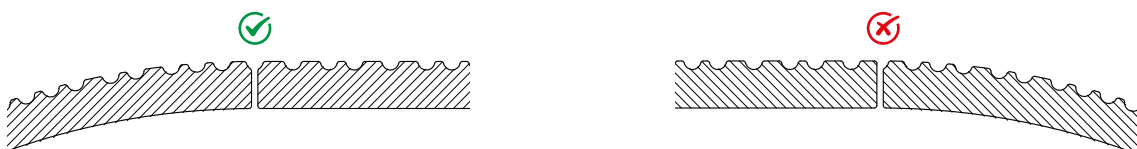


WITH PLEIN DOOR

2.2 cm thick door suitable for the push-to-open and Cesar's collection edgings.

FOCUS ON GROOVE DOOR

To accentuate Tangram's fluidity, the cabinet door features a special decorative detail made up of a sequence of vertical grooves designed and created with specific spacing for every single curved and linear model in the Tangram family, with the objective of creating an irregular three-dimensional pattern designed to hide the joints between modules and ensure a unitary perception of the entire arrangement. The irregular contour, the alternation between full and empty space, and the play of light and shadows conceal the openings of the doors, thus contributing to the final camouflaged effect. This design guarantees the alignment of the grooves' spacing in the moment that the doors are being installed next to one another.



TANGRAM

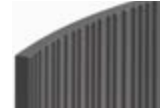
Design by García Cumini

DOORS

Door edge
Thickness 22 mm

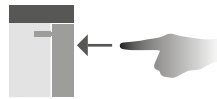
Plein door

Groove door



Opening methods

Push pull



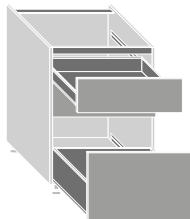
Door with handle



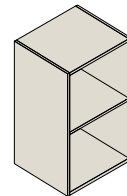
BASE UNIT H84 PLINTH H6

Straight base

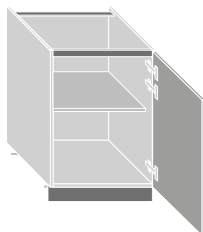
Drawers and jumbo drawers



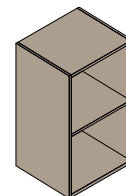
Cenere



Hinged door

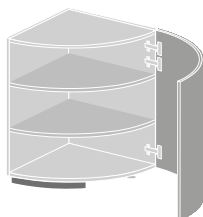


Grigio Fumo



Curved base

Hinged door only



Rovere Bruno



C E S A R

TANGRAM

Design by García Cumini

HANDLES RECOMMENDED BY CESAR

To enhance every detail of the project, the new Oi and Accento handles are now available, designed to fit into the doors' three-dimensional groove.

ACCENTO



Champagne



Nickel



Polished black nickel



Black



Bronze

OI (H12 e H23)



Champagne



Nickel



Polished black nickel



Black





Bronze

TANGRAM

Design by García Cumini

AVAILABLE FINISHES

	Plein door	Groove door
		
LACQUERS		
Gloss	✗	✗
Silk-effect	✓	✓
STRUCTURED LACQUERS	✓	✓
METALLIC EFFECT LACQUERS		
Oxidized effect	✗	✗
Satin effect	✗	✗
Anodyc effect	✓	✓
WOOD VENEERS		
Oaks	✓	✓

TANGRAM

Design by García Cumini

WORKTOPS

Natural stone	✓
Engineered stone	✓
MDi Inalco	✗
Dekton ceramics	✗
HPL bordo ABS	✗
Technomat with ABS edging	✗
Layered Uicolor	✗
Layered Fenix	✗
Glasses	✗
Inox	✓

The worktop could have one or more joints depending on the size of the composition and the chosen materials.

Processing for Natural stone and Engineered stone

The Tangram collection's look of seamless sinuosity is also created by the new Macaron detail present along the edge of the 22 cm thick natural stone and marble aggregate worktop, which recalls a traditional drip-saving groove and makes the rounded edge (created by hand using ancient techniques) both functional and aesthetically pleasing.



Macaron Éclair
edge processing



Macaron
edge processing



C E S A R

TANGRAM

Design by García Cumini



PLINTH

The curved plinths are positioned next to one another and covered by caps. The joints between them correspond with the bases and their curved doors.

FINISHES

Matt aluminium



Black aluminium



Champagne aluminium



Bronze aluminium



White painted aluminium



Silk-effect lacquers, structured lacquers and metallic effect lacquers



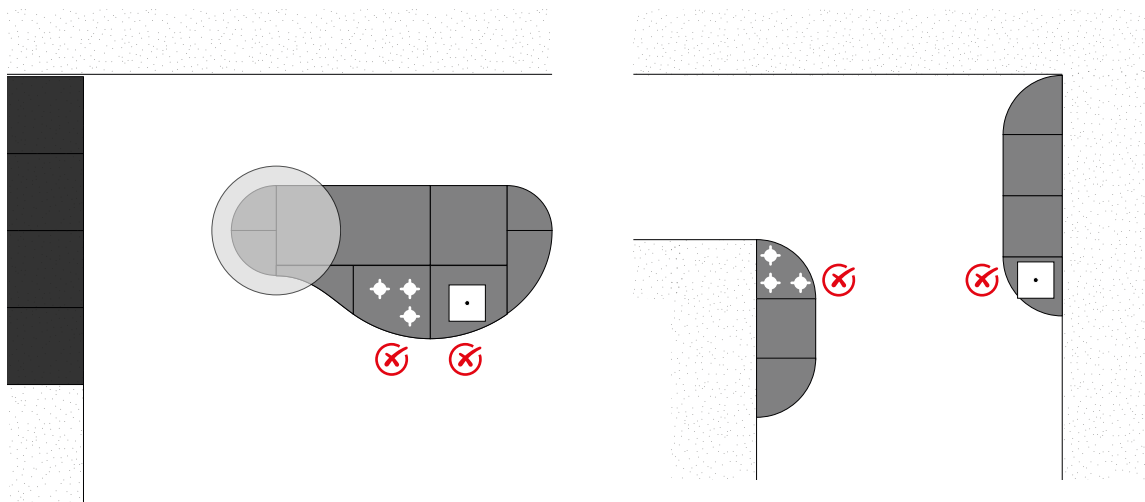
TANGRAM

Design by García Cumini

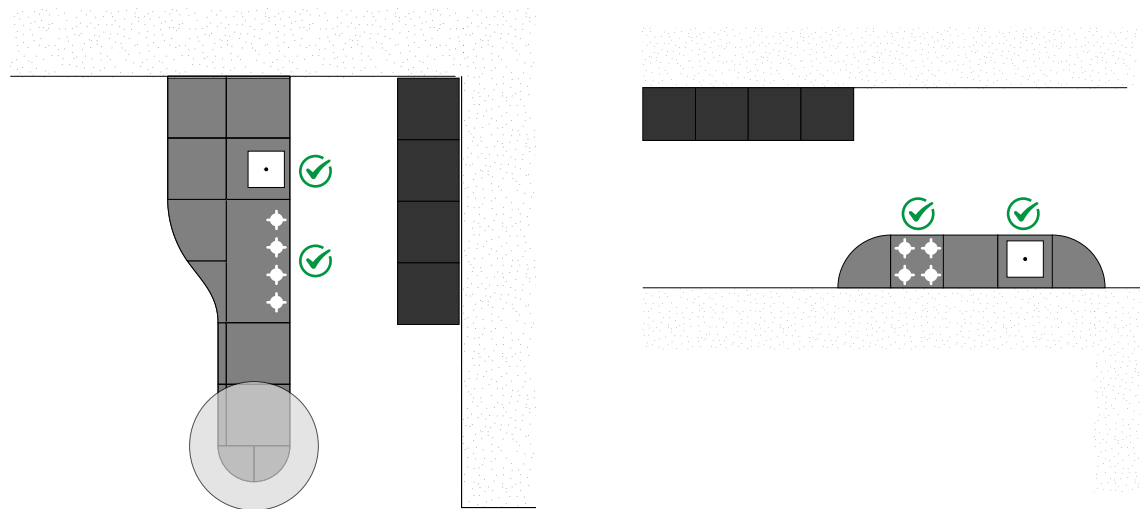
CONSTRAINTS FOR POSITIONING APPLIANCES

Sinks and cook tops cannot be positioned on curved bases.

WRONG POSITIONING



CORRECT POSITIONING



SIDEBOARD TANGRAM

Design by García Cumini

Tangram, with a height of 138 cm, makes it possible to have elegant cabinets that interact with the kitchen, living room, and bathroom environments, giving them a delicately modern and entirely original look.



WITH GROOVE DOOR

The Groove door, with a thickness of 2.2, is made up of a sequence of vertical grooves which create an irregular three-dimensional pattern, designed to hide the joint between the modules and ensure a unitary perception of the entire arrangement.



WITH PLEIN DOOR

2.2 cm thick door suitable for the push-to-open and Cesar's collection edgings.



WITH GLASS CABINET DOOR

Door in black anodized aluminum, 2.2 cm thick, with 0.4 cm thick tempered glass. The door can be enriched with the application of a fabric whose natural textures will give elegance and warmth to the environment.

external side



internal side



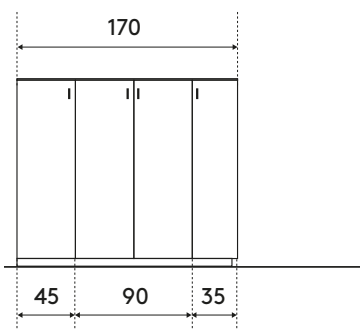
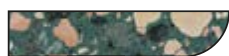
SIDEBOARD TANGRAM

Design by García Cumini

KITCHEN & LIVING

The Tangram sideboard, whether set against the wall or double-sided, can also be designed for the living room and dining room environments, making it possible to establish fluidity and continuity in the transition from one area of the house to another.

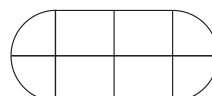
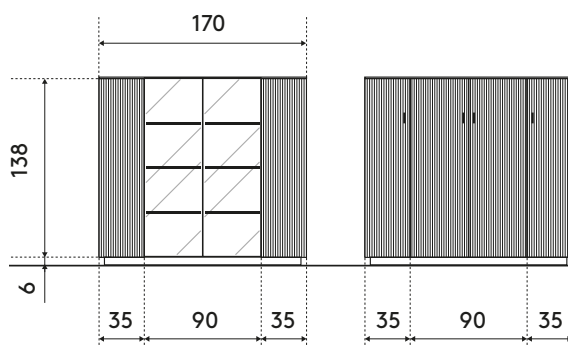
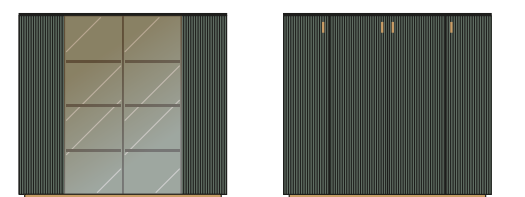
Example of wall composition



Example of double-sided composition

Living

Kitchen

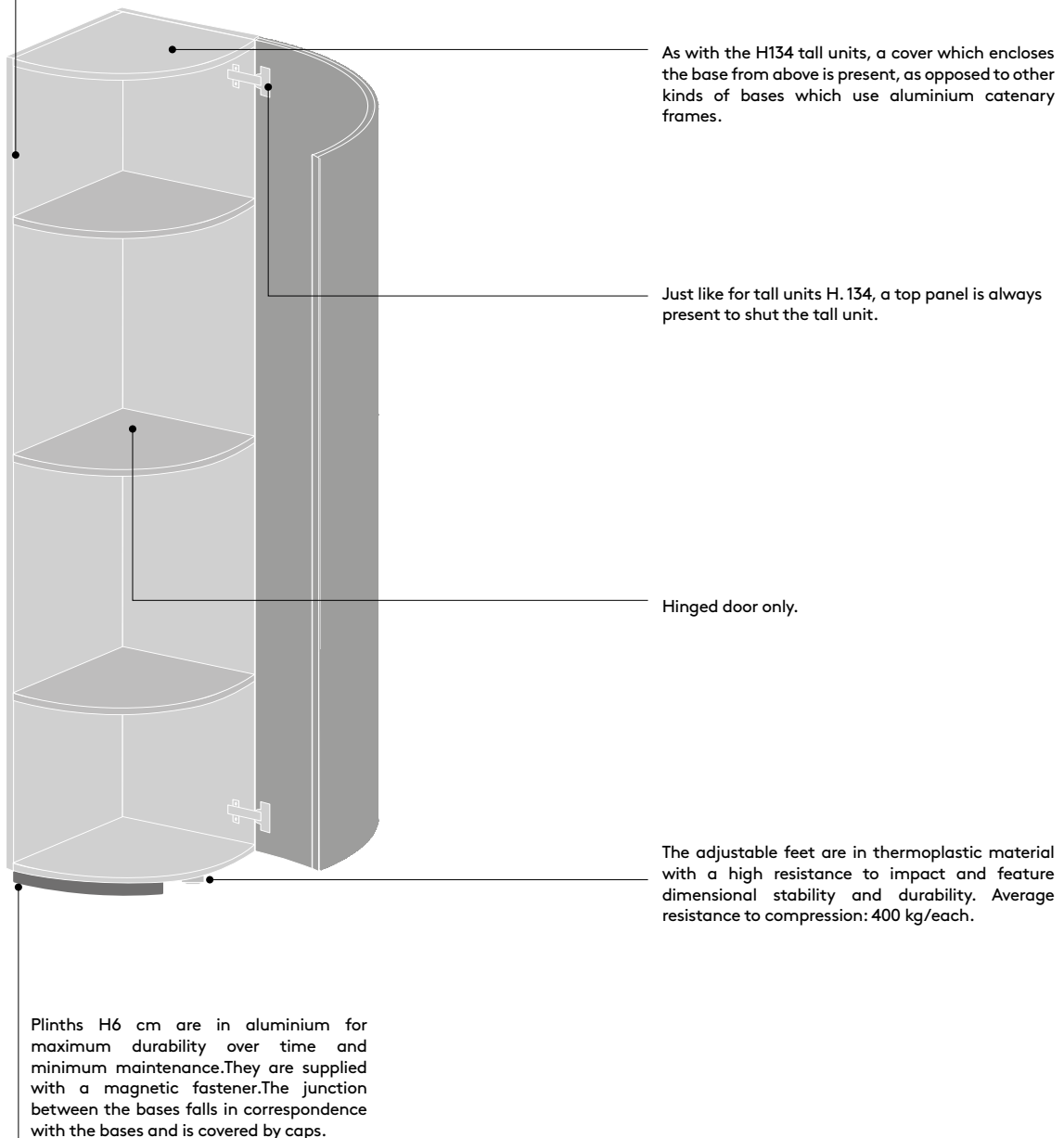


SIDEBOARD TANGRAM

Design by García Cumini

GENERAL CHARACTERISTICS TANGRAM CABINET WITH CURVED CARCASS

Carcasses: The materials used are FSC/Carb Phase II /TSCA Title VI compliant/F**** and V100 certified and ensure very low formaldehyde emissions and maximum resistance to humidity. They are 18 mm thick to ensure the perfect stability and durability of the hardware used.



SIDEBOARD TANGRAM

Design by García Cumini

GENERAL INFORMATION

Door thickness 22 mm

Door edge

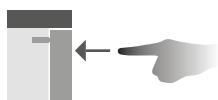
Glass cabinet door*

Groove door



Opening methods

Push pull



Door with handle



Door with handle integrated into the frame



* Glass door not available for curved modules

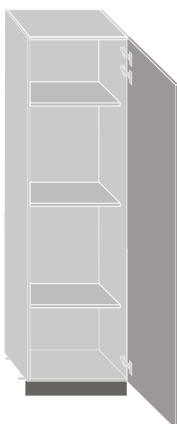
SIDEBOARD TANGRAM

Design by García Cumini

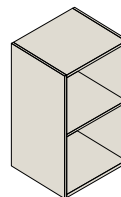
BASE UNIT H138 PLINTH H6

Straight base

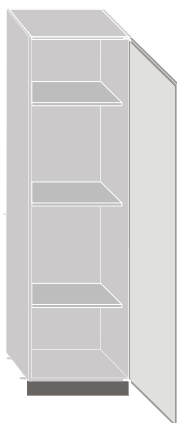
Hinged door
D35



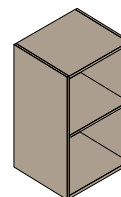
Cenere



Glass cabinet door
D35

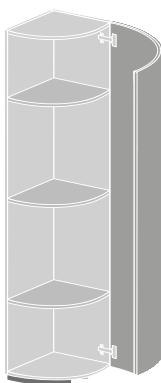


Grigio Fumo



Curved base

Hinged door
D35



Rovere Bruno



C E S A R

SIDEBOARD TANGRAM

Design by García Cumini

HANDLES RECOMMENDED BY CESAR

ACCENTO



Champagne



Nickel



Polished black nickel



Black



Bronze

OI (H12 e H23)



Champagne



Nickel



Polished black nickel



Black



Bronze

SIDEBOARD TANGRAM

Design by García Cumini

INCORRECT CABINET COMPOSITION

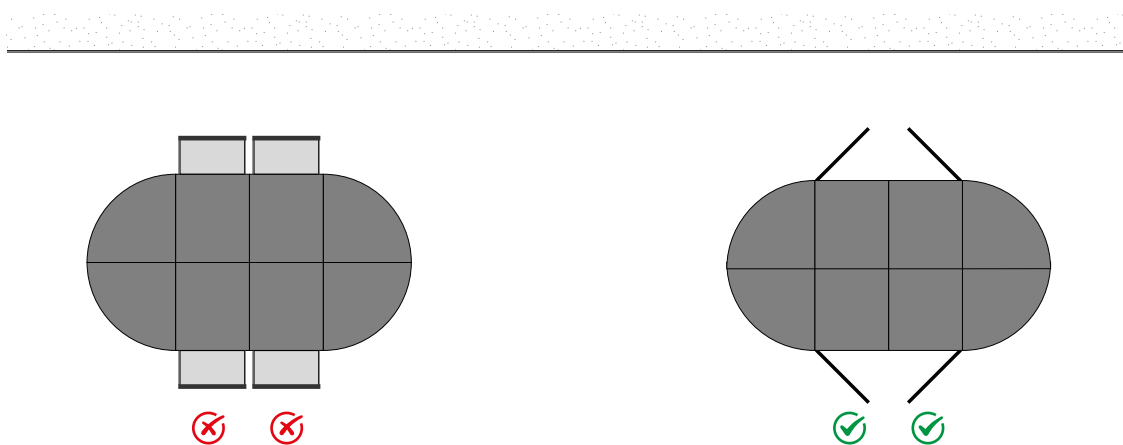
In every composition it is necessary to have at least one 30 cm carcass with a straight door.



It is only possible to install hinged doors.



It is only possible to install hinged doors.



TANGRAM

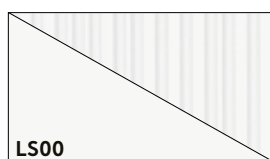
Design by García Cumini

FINISHES

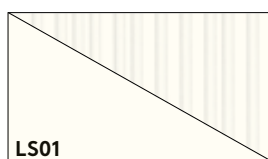
SILK-EFFECT LACQUERES/SILK-EFFECT LACQUERES GROOVE

Lacquer is a pigmented polyurethane resin applied to a MDF panel. Lacquering can have a silk-effect (matt) finish. To achieve the silk effect, a matting agent is applied directly over the lacquer.

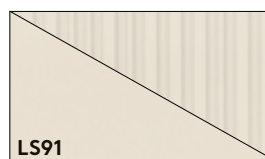
Plein door	Groove door
✓	✓



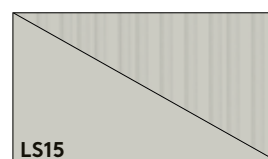
LS00
Bianco Assoluto



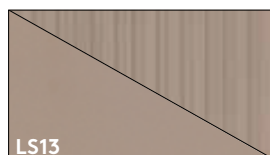
LS01
Bianco



LS91
Magnolia



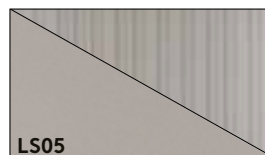
LS15
Cenere



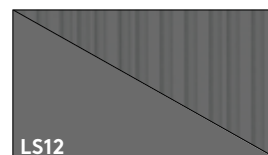
LS13
Creta



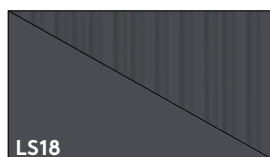
LS37
Orzo



LS05
Grigio



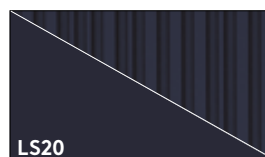
LS12
Plumbeo



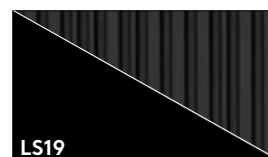
LS18
Grafite



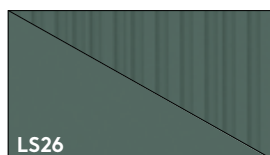
LS21
Titanio Grey



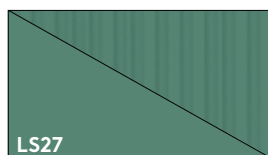
LS20
Notturmo



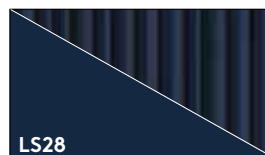
LS19
Nero



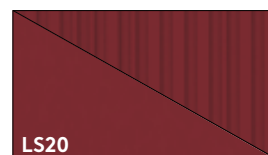
LS26
Verde Comodoro



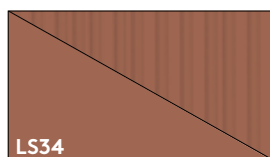
LS27
Verde Brac



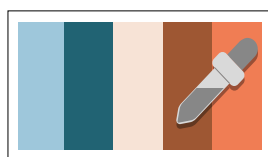
LS28
Blu Fes



LS20
Rosso Jaipur



LS34
Arenaria



* Customer's sample
lacquering

TANGRAM

Design by García Cumini

FINISHES

Plein door	Groove door
✓	✓

STRUCTURED LACQUERS / STRUCTURED LACQUERS GROOVE

This is a soft and elegant interpretation of paint for exteriors. This coating takes on different nuances depending on the light, creating changing tones that make surfaces "vibrate". A polyurethane basecoat is applied to an MDF panel. The edges are coated twice. After having sanded the panel, a coat of coloured lacquer is applied that basically creates a slight orange-peel effect and metallic reflections that give the door surface a "rippled" look. This finish features a textured surface and metallic pigments that enhance the colour with different hues depending on how light reflects on the surface. In pale-coloured finishes like quartz, this feature is more apparent and must be considered as a distinguishing feature of the finish and not as a fault.



TANGRAM

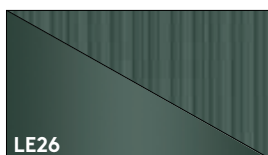
Design by García Cumini

FINISHES

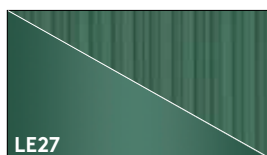
METALLIC EFFECT LACQUERS / METALLIC EFFECT LACQUERS GROOVE

Plein door	Groove door
✓	✓

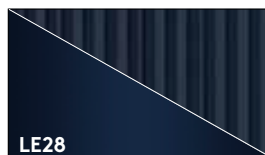
These finishes reproduce the effect of metals. A dark basecoat is applied to an unfinished MDF panel after which the skilled hands of lacquerers apply the metallic lacquer so as to create subtle, soft, light and dark differences in shade that produce a sort of 3D effect.



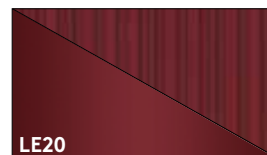
LE26
Verde Comodoro anodyc



LE27
Verde Brac anodyc



LE28
Blu Fes anodyc



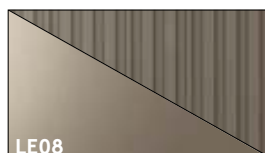
LE20
Rosso Jaipur anodyc



LE06
Ferro anodyc



LE07
Ottone anodyc



LE08
Nichel anodyc

TANGRAM

Design by García Cumini

FINISHES

Plein door	Groove door
✓	✓

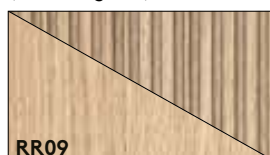
WOOD VENEERS / WOOD VENEERS GROOVE

A sheet of precious wood veneer is applied to a wood particleboard panel to give the finish a natural look and feel. This type of finish reduces the environmental impact created by felling trees because it replaces solid wood while preserving the same aesthetics. Moreover, it produces a lighter and more stable product. A finishing cycle of acrylic varnish preserves its features during day-to-day use.

OAK (ROVERE)

Is derived from trees belonging to the fagaceae family and is available in a palette of light, medium and dark colours to create timeless settings. First finishes are not available with a continuous grain match.

(vertical grain)



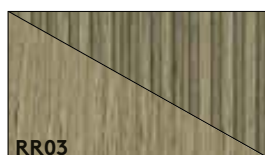
RR09

Rovere Nordico



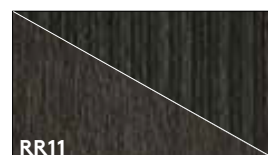
RR10

Rovere Mediterraneo



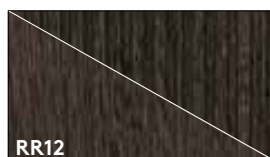
RR03

Rovere Argilla



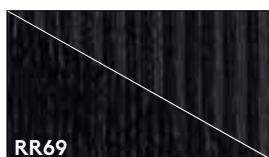
RR11

Rovere Fossile



RR12

Rovere Dark



RR69

Rovere Corvino